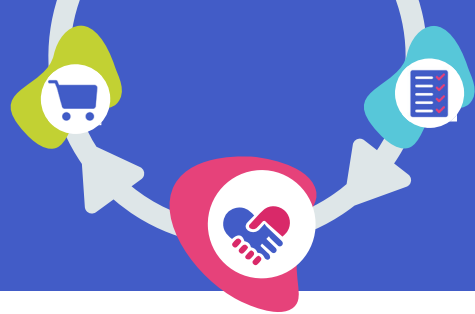


# DISPOSE & DONATE



## RECYCLING & DATA DESTRUCTION



Using a certified data destruction firm (Mesa, Phoenix & Memphis) significantly reduces your chances of a data breach



Transparency and on demand access to your records is critical, our online portal provides it



You can have zero-landfill impact when you choose to responsibly recycle



### Pick Up & On-Site Inventory

Whether in a closet, spread out, or already palletized, we make pickups and documenting the assets on-site a breeze.

What did we recycle again? Don't worry, we scan every asset, serial number, make and model

Are you worldwide? No problem, we can pick up around the world



### Responsible Recycling

No one wants to end up on 60 minutes, you can ensure nothing goes in a landfill

Not just computers, but cables, batteries and everything else you need to run your IT environment, we recycle it

Did you really make an impact? Absolutely! We provide you live reports of your positive environmental impact



### Reporting & Compliance

Want to make your auditors smile? We provide all the reporting you need to prove you did what you said you did

From Chain of Custody, Certificates of Destruction, to Asset Inventory can easily be integrated with your asset management system

Leveraging our industry leading processes allows you to stay in compliance without having to know every regulation

## What Make ER2 UNIQUE?

- Your recycled tech turns into a positive impact on communities globally
- It isn't just feel good story, we provide world-class, secure service
- Don't let a handshake be the only thing you rely on, you can lean on our 3rd party certifications, processes and insurance



### Asset Recovery

Make a quick pivot in your technology, but your assets still have value? We can purchase them to offset the cost

Need to get rid of some excess inventory? We can help you monetize it.



### Do Pickups

Complete your normal recycling pickups with ER2; no hoops to jump through



### Earn Credit

Every pickup adds donation dollars to your account that can be used on computers and other tech for charities of your choice



### Impact People

Share in the joy that's felt among communities that now have the devices they need to land that next job, or keep up with their studies

## DONATIONS & GIVING BACK

